

# Tools for Fiber Test & Monitoring

**VI.AVI**  
VI.AVI Solutions





# The challenge

of providing the increased bandwidth needed to support the development of services such as triple play is ongoing and can be daunting. Running optical fiber much deeper into the access network, in some cases all the way to the customer premises, is an important part of the strategy of every service provider. The appeal is that a fiber optic infrastructure offers the potential for practically unlimited bandwidth and also facilitates greater control over operating, administering, and provisioning the system.

Deployment, turn-up, and maintenance of fiber optic networks are in the core of the service provider's mission to ensure optimum quality of experience. Every stage of the network life cycle demands quality controls and proactive measurements to ensure integrity and efficiency of the optical transmission.

VIAVI offers a comprehensive portfolio of portable fiber optic test instruments and monitoring system solutions to cover all your network lifecycle needs for field testing, from installation and provisioning to maintenance and service assurance. From point solutions to highly scalable test platforms, technicians will always be equipped with the right tool to do the job right—the first time.





# Table of Contents

## Fiber Inspection & Cleaning .....4

FiberChek™ Probe Microscope.....	5
FiberChek Sidewinder™.....	5
P5000i Fiber Microscope.....	6
Ordering Information.....	7

## Visual Fault Locators (VFL) and Fiber Identifiers .....8

FFL-050/-100 Visual Fault Locators.....	8
FI-60 Live Fiber Identifier.....	9

## Optical Handhelds..... 10

MP-60/-80 Miniature USB 2.0 Power Meters.....	10
SmartPocket™ OLP-34/-35/-38 Optical Power Meters.....	11
SmartPocket™ OLP-37 RFoG and PON Power Meter.....	12
SmartPocket™ OLS-34/-35/-36 Optical Light Sources.....	12
SmartClass OLA-55 Optical Level Attenuator.....	13
SmartClass Fiber OLP-82,-82P.....	13
SmartClass Fiber OLP-85 Optical Power Meter.....	14
SmartClass Fiber OLS-85 Handheld Light Source.....	14
Specifications.....	15

## Handheld Optical Test Kits..... 16

SmartPocket™ OMK-34/-35/-36/-38 Optical Test Kits.....	16
SmartClass Fiber OLTS-85/85P Optical Loss Test Sets.....	17
SmartClass Fiber MPOLx - MPO Optical Loss Test Sets.....	18
Specifications.....	19

## FTTx/PON Optical Power Meters ....20

SmartClass Fiber OLP-87 PON Power Meters.....	21
SmartClass Fiber OLP-88 TruePON Tester.....	22
Specifications.....	23

## OTDRs ..... 24

Smart Link Mapper (SLM).....	24
SmartOTDR™ Handheld Fiber Tester.....	25
T-BERD/MTS-2000 Handheld Modular Test Set.....	26
T-BERD/MTS-4000 V2 Optical Test Platform.....	27-28
4100-Series OTDR Modules for T-BERD/MTS-2000, -4000, -5800 Platforms.....	29
FiberComplete Integrated Loss, ORL and OTDR Modules – 4100-Series for T-BERD/MTS-2000, -4000 V2 Platforms.....	30
CWDM OTDR Modules – 4100-Series for T-BERD/MTS-2000, -4000 V2 and 5800 Platforms.....	31
DWDM OTDR Module – 4100-Series for T-BERD/MTS-2000, -4000 V2, -5800 Platforms.....	32
Multi-Fiber MPO Switch Module for T-BERD/MTS-4000 V2 Platform.....	33
T-BERD/MTS-6000A v2 Compact Network Test Platform.....	34
T-BERD/MTS-8000 Scalable Multitest Platform.....	35
8100-Series OTDR Modules for T-BERD/MTS-6000A v2, -8000 Platforms.....	36
FiberComplete Integrated Loss, ORL and OTDR Modules – 8100-Series for T-BERD/6000A v2, -8000 Platforms.....	37
Hi-Res Multimode OTDR Solution.....	38

## Optical Dispersion Analysis..... 39

Optical Dispersion Measurement Module.....	39
Optical Broadband Sources for Dispersion Testing.....	40
Test results provided at the touch of a button.....	40

## Optical Spectrum Analysis ..... 41

COSA-4055 CWDM Optical Spectrum Analyzer Module for T-BERD/MTS-2000, -4000 V2, -5800 Platforms.....	41
OSA-110M/110H/110R Compact Full-Band OSAs.....	42
OSA-500M /500R/500RS High Performance Full-Band OSAs.....	43
OSA Modules: High resolution OSA-610 for T-BERD/MTS-6000A v2, -8000 Platforms.....	44
OSA Modules: In-service Pol-Mux OSA-710 for T-BERD/MTS-8000 Platforms.....	45
SmartClass OCC-55/-56 Optical Channel Checkers.....	46

## Post-Analysis PC Software ..... 47

## Asset, Data, and Workflow Management .....48

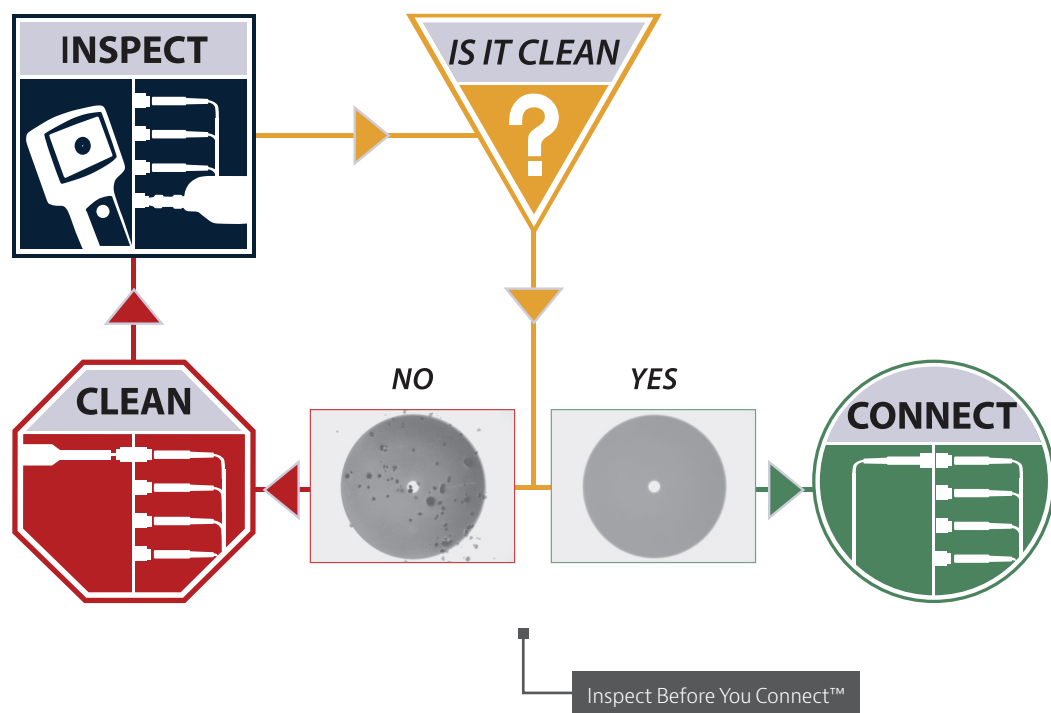
StrataSync™.....	48
CERTIFI.....	49

## Optical Network Monitoring .....50

SmartOTU™.....	50
ONMSi: Optical Network Monitoring System.....	51

# Fiber Inspection & Cleaning

Contamination is one of the main causes of optical network failure. Just one particle of dust can cause permanent damage and interrupt traffic. Visual inspection is the only way to determine if fiber optic connectors need to be cleaned before coupling.



VIavi offers a comprehensive product portfolio for inspecting every fiber connector and application in your network. Consistent use of the "Inspect Before You Connect" (IBYC) model ensures that proactive inspection is performed correctly every time that fiber optic end faces are cleaned prior to mating. This eliminates the installation of dirty or damaged fibers into the network and optimizes network performance.



## FiberChek™ Probe Microscope

### The essential fiber tool for every technician!

The FiberChek probe builds on industry-leading VIAVI expertise in fiber inspection to deliver an all-in-one handheld for technicians at every skill level. Meeting all fiberinspection needs with built-in image viewing, auto-focus, pass/fail analysis, and result storage and recall, the FiberChek probe completely automates inspection workflows to ensure fast and accurate performance. Used alone or connected to other devices (via WiFi and USB), the FiberChek probe is the essential fiber tool for every technician.

#### Key Features

- Integrated touch screen with live fiber viewing
- Auto-center
- Auto-focus
- Built-in fiber end-face analysis
- User-selectable acceptance profiles
- Stores results on device or exports
- Connects via WiFi and USB



## FiberChek Sidewinder™

Automated multifiber connector inspection and analysis FiberChek Sidewinder is the industry's first "all-in-one" handheld inspection and analysis microscope for multifiber connectors such as MPO. The latest addition to the VIAVI award winning FiberChek family delivers a completely automated solution to inspect and analyze every fiber of an MPO or other multifiber connector with industry-leading reliability and speed.

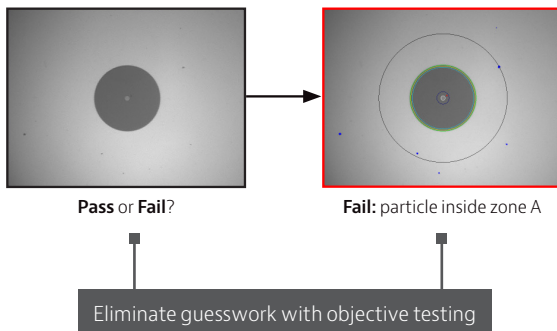


#### Key Features

- Integrated touchscreen
- Live fiber viewing
- Auto-center
- Auto-focus
- Auto-pan/scroll
- Built-in fiber end-face analysis
- Audible sounds for Pass/Fail results
- User-selectable acceptance profiles
- Stores results on device or export
- WiFi and USB connection to a PC or mobile devices
- All-day battery life
- Built in acceptance criteria to industry standards (IEC-61300-3-35)

## P5000i Fiber Microscope

The P5000i makes it fast and easy to certify that every connection in your network is clear and optimized. This intelligent fiber microscope removes the guesswork from fiber inspection and provides reliable and objective pass/fail analysis of the fibers that connect customers to your network—ensuring the best user experience possible. The P5000i fiber microscope also works with the many VIAVI test solutions users already rely on for essential network testing.



### Applications

- Ensuring physical layer performance and conformance to industry standards
- Capturing, analyzing, and grading fiber end-face images
- Standardizing fiber inspection, analysis, and grading processes

### Key Features

- Repeatable pass/fail analyses
- User-selectable acceptance criteria
- FiberChekPRO software for analysis and reporting with a PC/laptop
- Automatic image centering and dual-magnification switching
- Connection to SmartOTDR-2000/4000/5800/6000A/8000v2, HST-3000, SMARTClass Fiber, Certifier40G, DSAM, and CellAdvisor via USB
- Connection to mobile Android™ or iOS devices/tablets using FiberChekMOBILE or WiFi adapter module



## Ordering Information

Description	Part Number
<b>WiFi Adapter Module for P5000i</b> To connect a P5000i wirelessly to an Android™, iOS or Windows device	FBPP-WIFI
<b>P5000i Inspection Probe with USB Connection</b> Connector end-face inspection with pass/fail analysis; identifies and characterizes defects and contaminations on the connector surface. <ul style="list-style-type: none"> <li>• P5000i inspection probe with 7 tips</li> <li>• USB 2.0 connection</li> <li>• Pass/fail analysis according to IEC standard,</li> <li>– Compatible with all T-BERD/MTS platforms</li> <li>– FiberCheckPro: off-line certification software for customized reports creation</li> </ul>	FBP-MTS-101
<b>FiberChek™ Probe Microscope</b> Integrated touch screen with live fiber viewing <ul style="list-style-type: none"> <li>• FiberChek inspection probe with 6 tips</li> <li>• Auto-center</li> <li>• Auto-focus</li> <li>• Built-in fiber end-face analysis</li> <li>• User-selectable acceptance profiles</li> <li>• Stores results on device or exports</li> <li>• Connects via WiFi and USB</li> </ul>	FIT-FC-KIT3
<b>Cleaning Tools</b> Cleans connectors quickly and effectively without isopropyl alcohol and flammable toxic material that can damage the connector ferrule.	
CleanChek™ reel cleaner for patchcords (male connectors)	FCR-001
Box of 6 replacement reels for CleanChek	FCR-002
<b>Kitted Packages</b>	
Kit: FiberChek Sidewinder probe - WiFi, case, FCPP-OLA-1, FCPT-UFBPT, FBPP-BAP1, tip case	FIT-FCSW-KIT1
Kit: FiberChek Sidewinder probe - NO WiFi, case, FCPP-OLA-1, FCPT-UFBPT, FBPP-BAP1, tip case	FIT-FCSW-KIT1-NW
Kit: FiberChek Sidewinder probe - WiFi, case, FCPP-OLA-1, FCPT-UFBPT, FCPT-MTP, FCPT-MTPA, FCPT-UFBPT, FBPP-BAP1, tip case	FIT-FCSW-KIT2
<b>Accessories</b>	
Tip, MTP Bulkhead, for FiberChek Sidewinder	FCPT-MTP
Tip, MTP APC Bulkhead, for FiberChek Sidewinder	FCPT-MTPA
Objective Lens Assembly, for FiberChek Sidewinder	FCPP-OLA-1
Adapter, FBP Probe Interface, for FiberChek Sidewinder	FCPT-UFBPT
Carrying Case, for FiberChek Sidewinder	FCPP-SCASE4



CleanChek™ reel cleaner



Reel for CleanChek™

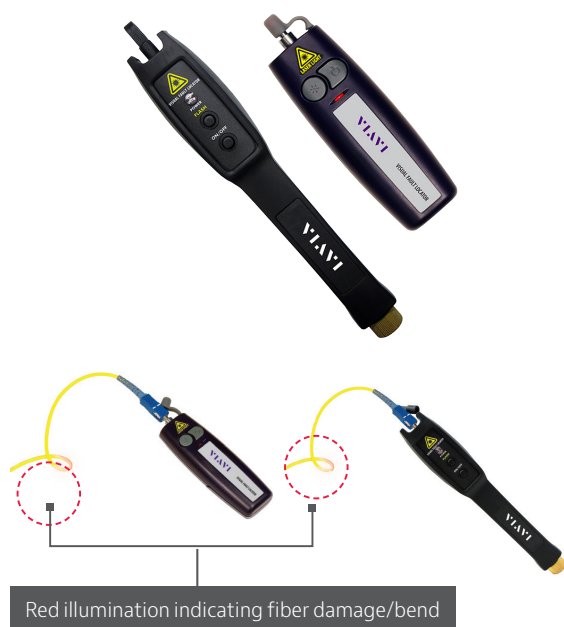


WiFi Adapter Module

# Visual Fault Locators (VFL) and Fiber Identifiers

## FFL-050/-100 Visual Fault Locators

A visual fault locator (VFL) is an essential tool that quickly and easily locates problem areas in fiber cables. By pinpointing the exact location of fiber damage, technicians can diagnose, troubleshoot, and fix the problem efficiently.



### Application

- Locating sharp bends, breaks, and damages in fiber
- Conducting end-to-end continuity tests
- Performing fiber tracing and identification

### Key Features

- Compact, ergonomic design for ultimate portability
- Visible wavelength at 650 nm
- High powered laser (1 mW) for singlemode (>7 km) and multimode (>5 km) connectors
- Continuous or flash illumination
- Universal connector interface for quick and easy connection
- 2.5 mm connector input (1.25 mm adapter available)
- Includes soft-sided carrying case with belt loop

## Specifications

Visual Fault Locators	FFL-050	FFL-100
Type	Pocket sized	Ruggedized
Dimensions	11 x 3 x 2 cm	22 x 3 x 3 cm
Range	>7 km singlemode, >5 km multimode	>7 km singlemode, >5 km multimode
Wavelength	650 nm visible	650 nm visible
Fiber type	Multi mode/singlemode	Multi mode/singlemode
Output power	1.0 mW max	1.0 mW max
Battery life	30 hr on continuous	80 hr on continuous
Connector	2.5 mm fixed, 1.25 mm adapter optional	2.5 mm fixed, 1.25 mm adapter



## FI-60 Live Fiber Identifier

The VIAVI FI-60 LFI enables users to easily detect the optical signal without disconnecting fiber or disrupting network traffic. FI-60 LFI also includes the unique VIAVI SafeChek™ system, which ensures safe and repeatable engagement with most fiber types without the hassle of changing out costly dies. The FI-60 also converts to an Optical Power Meter (OPM), providing twice the value for your investment and reducing the number of tools carried on the job.



### Application

- Detecting an optical signal without having to disconnect the fiber
- Installation, service, maintenance, or troubleshooting
- Integration with FiberChekPRO for combined inspection and test reporting

### Key Features

- LFI head accepts multiple cable diameters (250  $\mu$ m to 3 mm jacketed fibers)
- Durable metal input adapters (2.5 and 1.25 mm) for OPM
- Measures both absolute (dBm) and relative (dB) power
- Stores and recalls up to 100 OPM readings

## Specifications

Fiber Identifier	FI-60
Sensibility	-20 dBm @1310 nm -30 dBm @1550 nm
Dimensions	22 x 6 x 4 cm
Wavelength	850 nm to 1700 nm
Fiber	Multimode, singlemode
Power range [OPM]	-65 dBm to +10 dBm
Battery life	>70 hours
Connector	2.5 mm Fixed, 1.25 mm adapter

# Optical Handhelds

VIAVI offers the largest portfolio worldwide of power meters, PON power meters, return loss meters, light sources, loss test sets, variable attenuators, talk sets, and optical channel checkers. A pioneer in optical handheld instrumentation for more than 30 years, VIAVI has more than 150,000 optical handhelds already in use and has developed products that are recognized worldwide for their quality, reliability, ease-of-use, and low cost of ownership. The comprehensive line of VIAVI SmartClass optical handheld instruments and accessories offers a complete solution for optical field testing.

## MP-60/-80 Miniature USB 2.0 Power Meters

Quickly connecting to a PC/laptop, smartphone, or tablet, these power meters have size, functionality, and ease-of-use characteristics that make them extremely useful and practical tools for testing optical power levels. The simple, straightforward, and intuitive software interface offers a well-organized digital solution to both fiber inspection and test procedures.



### Applications

- Measuring general power and loss as well as high power applications in long-haul, metro, access, and local area networks with wavelengths ranging from 780 to 1625 nm
- Use with a VIAVI light source to detect modulation frequency and identify individual fibers

### Key Features

- Lightweight, small form-factor design for ultimate portability
- Generates measurements in dB, mW, and dBm with auto-voice readout option
- Automated data logging capabilities
- Automatic wavelength detection
- Easily connect to VIAVI test devices (HST-3000, CellAdvisor, DSAM, SmartOTDR), PCs (FiberChekPRO), and mobile devices (FiberChekMOBILE)



## SmartPocket™ OLP-34/-35/-38 Optical Power Meters

These pocket-sized, cost-effective optical power meters and light sources are ideal for the installation and maintenance of singlemode and multimode fiber optic networks because they offer ergonomic design with large displays and straightforward user interfaces.

SmartPocket optical power meters (OLP-34, OLP-35, and OLP-38) offer an excellent price/performance ratio in a rugged and pocket-sized housing for straightforward use in the field. Used primarily to measure optical power level (dBm) in premises, telco, or CATV fiber optic networks, they also can be combined with LED (OLS-34/OLS-36) or laser light sources (OLS-35/OLS-36) for insertion loss measurement.

### Applications

- The OLP-34 is dedicated to LAN/WAN access and enterprise multimode or single mode applications
- The OLP-35 covers all standard singlemode telecommunication networks
- The OLP-38 is the higher power (+26 dBm) version for any CATV (with analog RF transmission) or amplified DWDM system applications

### Key Features

- Extra long battery lifetime (>200 hr)
- Universal optical interface for all 2.5 mm/1.25 mm connector
- Individually-setable wavelengths per 1 nm step
- Micro USB interface for power supply or data transfer



## SmartPocket™ OLP-37 RFoG and PON Power Meter

The specialized VIAVI SmartPocket OLP-37 optical power meter can be used to conduct measurements during passive optical network (PON) and Radio Frequency over Glass network (RFoG) activation, maintenance, and troubleshooting. It can measure wavelength-selective optical power when testing B-PON, E-PON, or G-PON networks, as defined in ITU-T G.983/4, or IEEE 802.3ah, and RFoG systems, as defined in SCTE 174 2010.

### Applications

- All-in-one universal RFoG and PON power meter
- Testing B-PON, E-PON, G-PON downstream at 1490 nm
- Testing RFoG/video at 1550 nm downstream and at 1610 nm return path

### Key Features

- Wavelength-selective PON and RFoG power meter
- Internal memory can hold 100 test results
- Interchangeable FC/APC and SC/APC optical adapters
- Transfer data via micro USB interface
- Smart Reporter PC software for data management and report generation
- Uses dry or rechargeable batteries



## SmartPocket™ OLS-34/-35/-36 Optical Light Sources

SmartPocket optical light sources (OLS-35 and OLS-36) are the ideal complementary tools to the OLP-3x to measure the insertion loss and test the continuity in multimode datacom and local area networks as well as in singlemode telecommunication and CATV-multimedia networks.

### Applications

- The OLS-34 is dedicated to LAN/WAN access and enterprise multimode networks with 850/1300 nm
- The OLS-35 covers all standard singlemode telecommunication networks applications with 1310/1550 nm
- The OLS-36 is a quad-wavelength solution covering both multimode and singlemode wavelengths in one product (850/1300/1310/1550 nm)

### Key Features

- Micro USB interface for power supply
- One output port for 2 wavelengths





## SmartClass OLA-55 Optical Level Attenuator

High-performance SmartClass optical handhelds combine high functionality with straightforward operation and compact design to provide a complete line of optical power meters, light sources, optical attenuators, test kits, loss test sets, return loss meters, channel checkers, tunable laser sources, and optical talk sets for every field application in fiber optic networks.

SmartClass OLA-55 optical level attenuator is a variable attenuator for singlemode fiber system testing.



### Applications

- Emulating fiber loss for testing system dynamics
- Simulating line loss for BER testing and amplifier testing
- System installation and maintenance of multimode fiber (OLA-54) and singlemode fiber

### Key Features

- Robust, shock-proof, and splash-proof design for field operation
- USB port for remote operation
- Absolute and relative attenuation setting
- Traceable measurements to NIST/PTB standards for confidence in accuracy
- 400 adjustable wavelengths
- Long battery operation time (>1000 hr)

## SmartClass Fiber OLP-82,-82P

SmartClass™ Fiber is a product family of handheld test tools that integrate fiber inspection, optical testing and PASS/FAIL certification together in a single device. With SmartClass Fiber, technicians obtain ultimate flexibility and performance in a powerful, yet easy to use solution that can turn any technician into an instant fiber expert.



### Applications

- Measurement of optical power (absolute and relative)
- Measurement of optical insertion loss
- Inspecting fiber end faces – both patch cord and bulkhead

### Key Features

- Multiple calibrated wavelengths from 780 to 1625 nm
- 3.5 inch color touch screen.
- Automated pass/fail fiber inspection analysis with optional P5000i microscope
- Available with integrated patchcord microscope
- Supports both industry-standard and user definable acceptance criteria
- On board storage of fiber inspection and test results
- Integrated reporting capability and off-line certification software to create customized reports

## SmartClass Fiber OLP-85 Optical Power Meter

The OLP-85 high performance optical power meter is a professional, versatile, and compact instrument perfect for any fiber-optic network power or loss test applications. The OLP-85 perfectly fits applications where low power or very high power needs to be measured thanks to its high accuracy over an ultra-wide 100 dB dynamic range. The OLP-85 combines an optical power meter with pass/fail fiber inspection analysis capability into one portable solution.



### Applications

- Measurement of optical power (absolute and relative)
- Measurement of optical insertion loss together with a VIAVI optical light source OLS-3x or OLS-8x
- Inspection of optical connectors (requires a P5000i microscope)

### Key Features

- Multiple calibrated wavelengths in the range of 800 to 1700 nm
- 3.5 inch color touch screen with integrated stylus
- Individual threshold settings for power and loss pass/fail analysis
- Data transfer and remote control via USB or Ethernet interface
- Auto-lambda and multi-lambda test functions in combination with VIAVI optical light sources
- Automated pass/fail fiber inspection analysis with optional P5000i microscope

## SmartClass Fiber OLS-85 Handheld Light Source

The SmartClass Fiber OLS-85 handheld light source is a professional, versatile, and compact instrument used for fiber-optic network qualification and certification. Its specific wavelength combinations make it optimal for link loss testing and long-haul, metro, and access telecommunication network characterization, as well as data center and local area network testing.



### Applications

- Measurement of fiber insertion loss together with a VIAVI optical power meter OLP-3x or OLP-8x
- Inspection of optical connectors (requires a P5000i microscope)

### Key Features

- 3.5 inch color touch screen with integrated stylus
- Battery-operated field-portable optical light sources with 1310/1550 nm wavelengths
- Interchangeable SC and FC optical adapters
- Auto-lambda and multi-lambda test functions in combination with VIAVI optical power meters

## Specifications

Optical Power Meters	SmartPocket OLP-34	SmartPocket OLP-35	SmartPocket OLP-37	SmartPocket OLP-38	SmartClass OLP-82	SmartClass OLP-85
Power range	–60 up to +5 dBm	–65 up to +10 dBm	1490, 1550 & 1610 nm –45 to +13 dBm	–50 up to +26 dBm	Standard range –65 to +10 dBm High power –50 to +23 dBm	–75 up to +26 dBm
Detector type	Ge	InGaAS		Filtered InGaAS		Filtered InGaAS
Application	LAN	Access/metro/long haul	CATV & FTTH – B-PON, G-PON, E-PON, RFoG/ Video	Access/metro/long haul	LAN/WAN/enterprise/Access/Metro	DWDM
Auto/Multi lambda modes	✓	✓	✓	✓	✓	✓
Test report software	OFS-355	OFS-355	Smart Reporter	OFS-355	FiberChekPRO™	Smart Reporter
Data storage	100	100	100 results	100	10,000 results	10,000
WiFi	✗	✗	✗	✗	✗	✓ Optional

Optical Light Sources	SmartPocket OLS-34	SmartPocket OLS-35	SmartPocket OLS-36	SmartClass OLS-85
Source	LED	Laser	LED/Laser	Laser Class1
Fiber type	Multimode 850-1300 nm	Singlemode 1310-1550 nm	Multimode/Singlemode 850-1300-1310-1550 nm	Singlemode 1310-1550 nm
Output power	–20 dBm	–7 dBm	–20 / –7 dBm	0 to –3 dBm
Source modes	auto-multi-	auto-multi-	auto-multi-	CW, tone, auto-, multi-
Application	LAN/WAN/enterprise	Access/metro	LAN/WAN/enterprise/Access/Metro	Access/metro/core
WiFi	✗	✗	✗	✓ Optional

# Handheld Optical Test Kits

## SmartPocket™ OMK-34/-35/-36/-38 Optical Test Kits

SmartPocket optical test kits include an optical light source (OLS-3x), a power meter (OLP-3x), and additional accessories.

### Applications

- The OMK-34 is a dual-wavelength optical test kit with a single-port LED source (OLS-34) and a power meter with a universal push/pull adapter (UPP) interface (OLP-34) for power and loss measurement in singlemode and multimode LAN/WAN and enterprise networks
- The OMK-35 is a dual-wavelength optical test kit with a single-port laser source (OLS-35) and a power meter with a UPP interface (OLP-35) for singlemode power measurement and loss test in access and metro networks
- The OMK-36 is a quad-wavelength optical test kit with a dual-port light source (OLS-36) and a power meter with a UPP interface (OLP-35) for singlemode and multimode power and loss measurement
- The OMK-38 is a dual-wavelength optical test kit with a single-port laser source (OLS-35) and a power meter with a UPP interface (OLP-38) for singlemode power and loss measurement especially in high-power CATV networks

### Key Features

- Power meter: extra long battery lifetime (>200 hr)
- Power meter: universal optical interface for all 2.5 mm/1.25 mm connector
- Power meter: individually settable wavelengths per 1 nm step
- Light source: one output port for 2 wavelengths
- Micro USB interface for power supply or data transfer





# SmartClass Fiber OLTS-85/85P Optical Loss Test Sets

VIavi SmartClass Fiber OLTS-85/85P lets installers and technicians work fiber smart by integrating industry-leading fiber inspection with Tier 1 testing. This efficient, easy-to-use solution promotes best practices while cutting testing and certification time in half. Have confidence in your network quality and optimize your workflow with a single solution

## Applications

- Comprehensive tier 1 fiber testing to TIA/ISO/IEC standards
- Inspecting fiber end faces—both patch cord and bulkhead
- Generate certification reports

## Key Features

- Dedicated multimode, singlemode, and quad versions
- 3.5 inch color touch screen
- Measures length & optical loss (two fibers, two wavelengths), with polarity check
- Encircled flux compliant
- Automated pass/fail fiber inspection analysis with optional P5000i microscope
- Available with integrated patchcord microscope
- Direct reports via FiberChekPRO™ reporting software



## SmartClass Fiber MPOLx - MPO Optical Loss Test Sets

The VIAVI SmartClass Fiber MPOLx is the industry's first dedicated optical loss test set that can perform all the test requirements for Tier 1 (Basic) certification using MPO fiber connectivity.

The MPOLx gives technicians the ability to achieve a completely new level of productivity for MPO testing and certification. Like all our solutions for Tier 1 (Basic) fiber certification, identical local and remote units are provided to enable full visibility and control by performing tests from both the Light Source and Power Meter. All devices feature a 3.5 inch color touch screen and integrated inspection for both bulkhead and trunk connectors. The MPOLx allows a single technician to inspect MPO end faces and perform tests from either end of the connection, reducing walking back and forth between the two units. The MPOLx ensures fast workflows by delivering comprehensive test results in less than 6 seconds for all 12 fibers of the MPO connector providing color coded pass/fail test results, test limit, fiber length, test wavelengths, loss values, margins, and polarity results for each MPO fiber. The MPOLx provides a source and power meter that integrate essential MPO test capabilities together to ensure a fast and reliable workflow when testing and certifying network links with native MPO connectivity.

### Applications

- Comprehensive Tier 1 (Basic) fiber certification for MPO fiber connectivity
- Inspect fiber end faces
- Generate certification reports

### Key Features

- Measures length
- Measures optical loss at multiple wavelengths
- Checks polarity for all 12 MPO fibers
- Delivers test results for all 12 MPO fibers in <6 seconds
- Provides native MPO end-face inspection and automated analysis for both trunk cables and bulkheads
- Dual wavelength optical light sources
- Encircled flux compliant
- All-day battery life



## Specifications

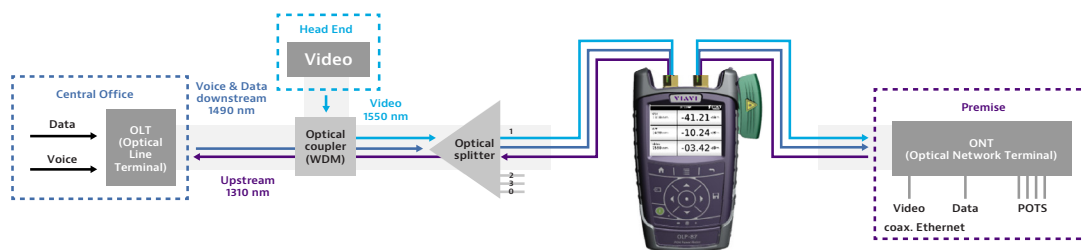
Optical Test Kits	SmartPocket OMK-34	SmartPocket OMK-35	SmartPocket OMK-36	SmartPocket OMK-38
Application	LAN/WAN/enterprise	Access/metro	LAN/WAN/enterprise/ Access/metro	Access/metro
Light source	✓ OLS-34	✓ OLS-35	✓ OLS-36	✓ OLS-35
Power meter	✓ OLP-34	✓ OLP-35	✓ OLP-35	✓ OLP-35
Fiber inspection	✗	✗	✗	✗
Fiber type	Multimode 850 – 1300 nm	Singlemode 1310 – 1550 nm	Multimode/Singlemode 850-1300-1310-1550 nm	Singlemode 1310 – 1550 nm
WiFi	✗	✗	✗	✗

Optical Test Kits	SmartClass OLTS-85	SmartClass MPOLx
Application	LAN/WAN/Enterprise – Tier 1 cert Access/metro/core	LAN/WAN/Enterprise – Tier 1 cert Access/metro/core
Optical interface power meter	Interchangeable adapter LC/PC, LC/ APC (optional 2014-style adapters: SC, ST, FC, DIN, E2000 and UPP 2.5 mm and UPP 1.25 mm)	MPO-12 Interface pinned. Compatible with 50/125 µm/PC Multimode MPO-12, 9/125 µm/APC Singlemode MPO-12. MTP Adapter with Shutter
Optical interface light source	Multimode: Interchangeable adapter FC/PC (optional 2155-style adapters: SC, ST, and LC)  Singlemode: Interchangeable adapter SC/PC (optional 2155-style adapters: FC, ST and LC)	Multimode: MPO-12 Interface pinned, 50/125 µm/ PC Multimode. MTP Adapter with Shutter  Singlemode: MPO-12 Interface pinned, 9/125 µm/ APC Singlemode. MTP Adapter with Shutter
Light source	(OLTS-85/P)	(MPOLS-8x/P)
Power meter	(OLTS-85/P)	(MPOLP-8x/P)
Fiber inspection scope	Optional (P5000i)	Optional (P5000i)
Integrated patch cord microscope	Optional	Optional
Fiber type & Wavelength options	Multimode 850/1300 nm Singlemode 1310/1550 nm	Multimode 850/1300 nm Singlemode 1310/1550 nm
WiFi	Optional	Optional

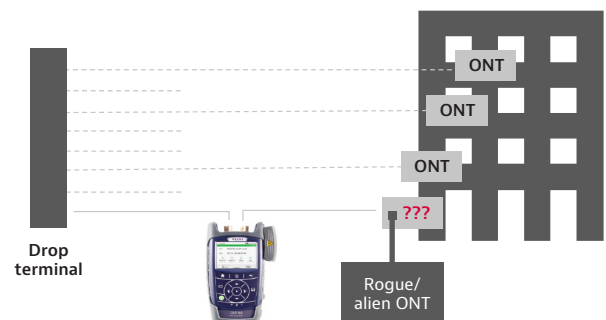
# FTTx/PON Optical Power Meters

A PON power meter is a test instrument for FTTx network service activation and troubleshooting. Through-mode capability allows the simultaneous measurement and display of both the continuous downstream wavelengths (for data and RF video) and the bursty upstream wavelengths. Preset industry standards or user definable criteria provide clear Pass/Fail indicators and ensure both the network and customer installs are meeting required specifications.

The new generation of PON tester performs downstream and upstream PON power level measurements like traditional PON power meters and identifies ONU/ONT by serial number with detection of rogue/alien ONUs/ONTs. For GPON systems carrying PON-ID, it also identifies OLT.



In addition the new generation of PON testers can use PON-ID information and G-PON data analysis to determine ONU/ONT service activation status, allowing techs to check if an ONU/ONT is provisioned correctly with the OLT and to verify an ONU/ONT is routed to or connected to the correct OLT port. Plus checking for any rogue or alien ONU/ONT devices potentially disrupting service to other customers.





## SmartClass Fiber OLP-87 PON Power Meters

The OLP-87 is an FTTx/PON power meter for use in activating and troubleshooting B-PON, E-PON, G-PON and high speed 10G PON such as XG-PON and 10G-EPON networks, plus the next generation of NG-PON2 networks. The OLP-87 combines a high-performance wavelength-selective power meter with pass/fail fiber inspection analysis capability in one portable solution.



### Application

- FTTx/PON network service activation and troubleshooting
- Simultaneous power measurement of upstream and downstream signals on live PON networks
- Automated pass/fail fiber inspection

### Key Features

- Field-portable  $\lambda$ -selective PON power meter with through-mode capability
- Variations of 1490/1550/1578 nm downstream and 1270 nm/1310 upstream
- High performance broadband power-meter option
- Automated pass/fail fiber inspection analysis with optional P5000i microscope
- Integrated patchcord microscope version available
- Up to 10,000 measurement results storage
- Data transfer via USB, Ethernet or optional WiFi connection

## SmartClass Fiber OLP-88 TruePON Tester

The OLP-88 TruePON tester is the ideal tool for field technicians dealing with GPON network service activation and for support teams charged with resolving service complaints and identifying the sources of issues. TruePON uses GPON data analysis for real-time measurement of fiber optic cable insertion loss, downstream and upstream power levels, ODN class, and for instantaneous identification of OLT-ID ONU/ONT-ID as well as rogue ONUs causing service issues. The OLP-88 ensures more reliable PON tests and faster troubleshooting of network issues.



### Application

- GPON ONT activation process verification
- OLT and ONT identification (serial number extraction)
- PON signal automatic power level measurement and certification
- Rogue ONUs or alien device identification
- Automated pass/fail fiber inspection

### Key Features

- GPON ONT activation process verification
- OLT and ONT identification (serial number extraction)
- GPON signals automatic power level measurement and certification
- Rogue ONUs or alien devices identification
- Automated pass/fail fiber inspection analysis with optional P5000i microscope
- Integrated patchcord microscope version available
- Up to 10,000 measurement results storage
- Data transfer via USB, Ethernet or optional WiFi connection

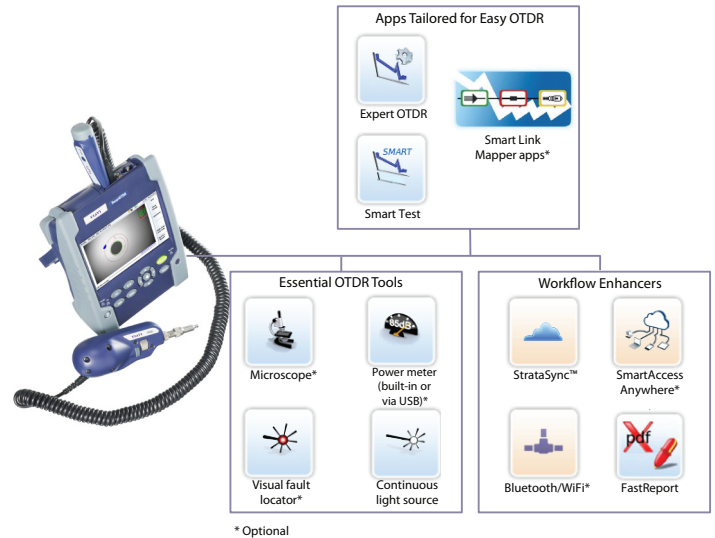
## Specifications

SmartClass FTTx Optical Power Meters	OLP-87	OLP-87	OLP-87 XG-PON	OLP-88	OLP-88
Wavelengths	1310/1490 nm	1310/1490/1550 nm	1270/1310/1490/1550/1578	1310/1490 nm	1310/1490/1550 nm
Selective power meter	✓	✓	✓	✓	✓
Broadband power meter	✓	Optional	Optional	✗	✗
PON standards	B-G-E	B-G-E	B-G-E XG-PON 10G-EPON	B-G-E	B-G-E
RF Video signals 1550nm	✗	✓	✓	✗	✓
GPON-ID*	✗	✗	✗	Optional	Optional
ONT-ID	✗	✗	✗	Optional	Optional
Alien/Rogue ONU detection	✗	✗	✗	Optional	Optional
USB	✓	✓	✓	✓	✓
WiFi	Optional	Optional	Optional	Optional	Optional
Data Storage	10,000 results	10,000 results	10,000 results	10,000 results	10,000 results
Fiber inspection for bulkhead ports and fibers/patch cords	Via external probe P5000i (option)			Via external probe P5000i (option)	
Fiber inspection for patch cords	Via integrated patch cord microscope (option)			Via integrated patch cord microscope (option)	
Test reporting software	Smart Reporter			Smart Reporter	

\* Requires activation of PON-ID functionality in G-PON network systems according to ITU-T G.984.3 Amd3

# OTDRs

An OTDR is a fiber optic tester for the characterization of optical networks that support telecommunications. The purpose of an OTDR is to detect, locate, and measure elements at any location on a fiber optic link. An OTDR needs access to only one end of the link and acts like a one-dimensional radar system. By providing pictorial trace signatures of the fibers under test, it's possible to get a graphical representation of the entire fiber optic link.



## Smart Link Mapper (SLM)

An optical time domain reflectometer (OTDR) is an essential fiber test tool that helps service providers ensure that their fiber network infrastructure is optimized to deliver reliable and robust services. OTDR operation and usability has been simplified over the years; however, it is still considered an advanced instrument to operate and interpreting measurement results can be complex. The Smart Link Mapper (SLM) intelligent optical software application helps technicians use an OTDR more effectively, without the need to understand or interpret OTDR results. Each event is displayed as an icon giving users a schematic view of the entire link, known as SmartLink. SLM can completely correlate to the original OTDR trace as experts desire.

With this common approach to simplify OTDR testing and streamline the procedures, four tailored SLM OTDR applications are available for different network types Enterprise-SLM, FTTH-SLM, FTTH-SLM and Cable-SLM.

### Application

- Installation and commissioning of enterprise, access, and metro networks
- Installation and maintenance of wireless backhaul
- Link characterization of long/xWDM networks
- Troubleshooting of any fiber network
- Singlemode and multimode fiber links

### Key Features

- Eliminates OTDR results interpretation complexity
- Directly correlates SmartLink view results and OTDR trace
- Immediately diagnoses problems
- Automatic pass/fail results
- Compatible with all multimode/singlemode and OTDR modules
- Enabled on SmartOTDR and all recent T-BERD/MTS-2000, -4000 V2, -6000A v2, and -8000 OTDR platforms
- Upgradable on site



## SmartOTDR™ Handheld Fiber Tester

The SmartOTDR essential handheld fiber tester is an affordable, easy-to-use device for techs at any skill level, with robust wireless connectivity options that increase productivity anywhere. It integrates all essential fiber test requirements into a single device with OTDR measurement, fiber end-face analysis, optical loss testing, and a visual fault locator.

### Application

- Characterize point-to-point access and metro fiber networks
- Qualify and troubleshoot FTTH/PON networks
- Qualify and troubleshoot singlemode FTTA/DAS fronthaul

### Key Features

- 5 inch touch-screen display
- Single-/dual-/tri-wavelength versions with 1310, 1550, and in-service 1625 or 1650 nm wavelengths
- PON optimized to test through a 1x128 splitter (B version)
- Integrated CW light source on OTDR port
- Built-in optical power meter and VFL options
- Automated pass/fail fiber inspection analysis with optional P5000i microscope
- Smart Link Mapper (SLM) eliminates OTDR interpretation errors without impacting test times



VIAMI StrataSync enabled

## Specifications

SmartOTDR							
	Central wavelength	RMS dynamic range	Event dead zone	Attenuation dead zone	Splitter attenuation dead zone	Network Type	Application
100A series	1310/1550/1650 nm ±20 nm	37/35/32 dB	1.35 m	4 m	Not available	Access, PON, CATV	Last Mile FTTx, FTTH/PON, HFC Qualification, Installation, Maintenance
100B series	1310/1550/1625 nm ±20 nm	40/40/41 dB	0.9 m	2.5 m	45 m after 15 dB splitter loss	Metro, Access, PON, Wireless	Metro, Last Mile FTTx, FTTH/PON Qualification, Installation, Maintenance

## T-BERD/MTS-2000 Handheld Modular Test Set

The T-BERD/MTS-2000 is a handheld modular test set for the installation, turn-up, and maintenance of optical fibers across enterprise, metro, and FTTx/access point-to-point or point-to-multipoint networks (PONs).

The T-BERD/MTS-2000 provides the largest range of test capabilities offered in one handheld unit. The modular design gives service providers the maximum flexibility to scale their investment and evolve with the growth of their network. The instrument supports the whole range of essential fiber analysis tools including connection inspection, connection check, light source and power meter. As well as standard OTDR modules, PON optimized OTDR modules, CWDM and DWDM OTDR modules, and CWDM optical spectrum analyzer module.



VIAVI StrataSync enabled

### Application

- Characterize point-to-point access and metro fiber networks
- Qualify and troubleshoot FTTH/PON networks
- Qualify and troubleshoot singlemode or multimode FTTA/DAS/C-RAN fronthaul
- Qualify and troubleshoot multimode fiber links in LAN/WAN, enterprises, and data centers
- Characterize and troubleshoot fiber links with exact CWDM & DWDM wavelengths
- FiberComplete fully automated bi-directional IL/ORL & OTDR certification

### Key Features

- 5 inch touch-screen display
- Single-/dual-/tri-wavelength versions with 1310, 1550, and in-service 1625 or 1650 nm wavelengths
- Dual multimode (850/1300 nm) or quad wavelengths multimode/singlemode (850/1300/1310/1550 nm) versions
- PON optimized to test through a 1x256 splitter
- Automated pass/fail fiber inspection analysis with optional P5000i microscope
- OTDR modules are compatible with T-BERD/MTS-4000 V2 multiple services test platforms
- Smart Link Mapper (SLM) eliminates OTDR interpretation errors without impacting test times
- Built-in optical power meter and VFL options

# T-BERD/MTS-4000 V2 Optical Test Platform

The T-BERD/MTS-4000 V2 is a small, compact and handheld test platform designed for all phases of the network lifecycle, from the installation to the maintenance of Metro, Core, Access, FTTH, FTTx, HFC, Wireless, 5G, Enterprise and Data Center networks. Modular in design, the T-BERD/MTS-4000 V2 offers engineers, technicians, installers and contractors the highest performance and superior levels of scalability and upgradeability.



VIAVI StrataSync enabled

## Application

- Full network lifecycle: Construction, Activation, Maintenance & Troubleshooting
- Essential fiber test: OTDR, FiberComplete™ (automated bi-directional IL/ORL & OTDR), Connector inspection with IEC Pass/Fail Analysis
- FTTH: PON optimized OTDR & selective power meters for E-PON, G-PON, XGS-PON, NG-PON2 networks
- Hybrid CWDM/DWDM: combined CWDM or DWDM OTDR and C-OSA test platform
- Wireless: singlemode and multimode test for C-RAN, DAS and 5 G deployments
- Enterprise & Data Center: integrated solution for multi-fiber MPO cable tier-2 certification
- Metro Core: long haul OTDR for high speed 10 G/40 G/100 G fiber link qualification

## Key Features

- Lightweight platform: only 1.4 kg / 3 lbs
- 9 inch high visibility multi-touch screen with permanent function keys
- Dual-modular platform with field-replaceable modules
- Essential tools integrated and supported in the platform (visual fault locator, optical power meter, optical microscope and talkset)
- Smart Access Anywhere (SAA) for remote control & field tech support
- StrataSync enabled — centralized cloud based asset, configuration, test data and workflow management
- Report Generation – on-board instrument, via PC/laptop (FiberCable SW suite) and StrataSync
- Cost-effective (3yr warranty), compact and handheld platform

The T-BERD/MTS-4000 V2 platform is a highly integrated optical test platform with two module bays, a large 9 inch color touchscreen with multi-touch capability, enabling the use of many optical test functions. It supports the range of VIAVI fiber analysis tools including OSA, OTDR, bidirectional insertion loss/ORL, light source, power meter, and connector inspection.



Fiber optics application modules used with the T-BERD/MTS-4000 V2 can also be used with the T-BERD/MTS-2000 and the two products are interoperable.



## 4100-Series OTDR Modules for T-BERD/MTS-2000, -4000 V2, -5800 Platforms

VIAVI 4100-Series OTDR modules let field technicians rapidly, reliably, and cost-effectively install, turn-up, and troubleshoot any optical network architecture—enterprise, metro, and FTTx/access point-to-point or point-to-multipoint passive (PONs). The OTDR modules' optical performance, combined with the complete suite of T-BERD/MTS platform testing features, ensures that testing is done right—the first time.

### Standard testing features include:

- Automatic macrobend detection
- Summary results table with pass/fail analysis
- Bidirectional OTDR analysis
- Fast-Report — onboard report generation

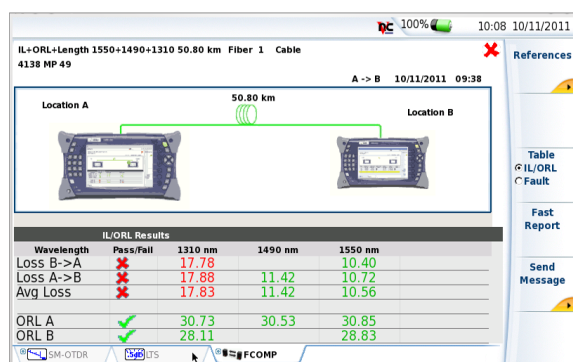


## Specifications

OTDR Modules (typical at 25°C)						
	Central Wavelength	RMS Dynamic Range	Event Dead Zone	Attenuation Dead Zone	Network Type	Applications
MM	850/1300±30 nm	26/24 dB	0.8 m	4 m	Enterprise/FTTA	Multimode network qualification
Quad	850/1300 ±30 nm 1310/1550 ±20 nm	26/24 dB 37/35 dB	0.8 m 0.9 m	4 m 4 m	Enterprise/ FTTA/access/ metro	Multimode and singlemode short- and medium-haul network qualification
LA	1310/1550/1650 ±20 nm	35/33/30 dB	1.5 m	6 m	FTTA/FTTH/ access	Short-haul qualification FTTH drop-cable qualification/maintenance
MA2	1310 ±20 nm 1550 ±20 nm 1625 ±10 nm	40 dB 40 dB 38 dB	0.7 m	3 m	FTTA/access/ metro	Short/medium-haul qualification Wireless fronthaul and backhaul
MA3	1310 ±20 nm 1550 ±20 nm 1625 ±10 nm 1650 +10/-5 nm	43 dB 41 dB 41 dB 41 dB	0.7 m	3 m	FTTA/access/ metro/long-haul	Short/medium/long-haul qualification FTTH test up to 1x128 splitter
MP2	1310 ±20 nm 1550 ±20 nm 1625 ±10 nm 1650 ±10 nm	45 dB 43 dB 43 dB 42 dB	0.65 m	2.5 m	FTTA/long-haul/ very long-haul	Long-haul/very long-haul qualification FTTH test up to 1x256 splitter

# FiberComplete Integrated Loss, ORL and OTDR Modules – 4100-Series for T-BERD/MTS-2000, -4000 V2 Platforms

You can now equip each technician with a single piece of equipment that fulfils all of the traditional fiber testing requirements. FiberComplete is the only solution to perform all the fundamental fiber-qualification tests, such as bidirectional insertion loss (IL), optical return loss (ORL), and optical time domain reflectometry (OTDR) in one module from one optical port, using one fiber connection with one button-push operation. FiberComplete cuts testing in half with fewer connection and disconnections, automatic continuity check and an intelligent fault finder, minimizes training and gets reliable measurements using a fully automated process with easy-to-read results, and optimizes workflow by compiling tests results into one complete cable view and automatically storing all measurements in one folder. Based on the 4100 series MA3 modules this unique automated solution saves 50% testing time on fiber optic network deployment and is the only bi-directional loss test set on the market that can characterize splices and connectors, and locate faults.



## Application

- Certification, maintenance and troubleshooting of any fiber optic links
- Installation and commissioning of Access, Middle Mile and Metro networks
- FTTH/PON network construction and acceptance testing
- Automatically measure bidirectional OTDR, IL, and ORL with one unit
- Troubleshoot in FaultFinder mode for immediate results

## Key Features

- Single module, single port testing
- Make one connection, one-touch automated measurements
- Approx. 2 min 40 secs for full bidirectional certification (inc. report generation)
- Real-time continuity check and automatic product pairing
- Full setup exchange between instruments
- Manage fiber and cable results with on-board report generation
- Step by step wizard for initial IL/ORL test referencing
- Based on MA3 module, supported on T-BERD/MTS-2000, -4000 V2

## Specifications

Bi-directional Testing	
Wavelength	1310 / 1550 / 1625 nm
Insertion Loss	
Dynamic range	40 dB typical
IL uncertainty	+/-0.25 dB
IL repeatability	<0.05 dB
Display resolution	0.01 dB
ORL	
ORL range	up to 45 dB
ORL uncertainty	+/-0.9 dB
Display resolution	0.01 dB
Length	
Measurement range	150 km
Accuracy	+/-30 m

# CWDM OTDR Modules – 4100-Series for T-BERD/MTS-2000, -4000 V2 and 5800 Platforms

VIAVI CWDM OTDR solution enables cable operators, dark fiber providers and telecommunication service providers to test through MUX/DEMUX and perform a complete end-to-end link characterization or troubleshooting of active C-RAN, DAS and mobile fronthaul CWDM networks.



## Application

- Characterize end-to-end links with exact CWDM wavelengths
- Troubleshoot active networks with in-service testing capability
- Verify end-to-end continuity with the continuous wave source function
- Certification and troubleshooting of hybrid CWDM/DWDM networks (when paired with DWDM OTDR module and T-BERD/MTS-4000 V2)

## Key Features

- CWDM8U version includes 8 wavelengths from 1471 nm to 1611 nm
- CWDM10U version includes 10 wavelengths from 1431 nm to 1611 nm
- CWDM10L version includes 10 wavelengths from 1271 nm to 1451 nm
- Integrated CW light source with modulation capability (same OTDR wavelengths)
- Eliminate OTDR interpretation errors with Smart Link Mapper (SLM) (icon based view of fiber link with splice, connector, MUX/DEMUX)
- Compatible with T-BERD/MTS-2000, -4000 V2 and -5800 platforms

## Specifications

CWDM OTDR	
Wavelengths	1271/1291/1311/1331/1351/1371/1391/ 1411/1431/1451/1471/1491/1511/1531/ 1551/1571/1591/1611 nm +/-3 nm
Dynamic range	35 dB
Event dead zone	1.5 m
Attenuation dead zone	5 m
Continuous Wave Light Source	Wavelengths: same as OTDR
	Output power -3.5 dBm
	Operating modes: CW, 270 Hz, 330 Hz, 1 kHz, 2 kHz
Automatic traffic detection	Yes
In-service testing	Yes

4100 CWDM OTDR Modules	
10 Lower $\lambda$ (1271 to 1451 nm)	
8 Upper $\lambda$ (1471 to 1611 nm)	
10 Upper $\lambda$ (1431 to 1611 nm)	

## DWDM OTDR Module – 4100-Series for T-BERD/MTS-2000, -4000 V2, -5800 Platforms

The VIAVI DWDM OTDR solution enables performing a complete end-to-end link characterization and troubleshooting through MUX/DEMUX of newly deployed or active DWDM and Hybrid CWDM/DWDM networks. It's the perfect OTDR for cable, mobile, and telecommunications operators dealing with C-RAN and mobile front haul access networks, passive DWDM networks for cable TV business services, and next-generation FTTH networks.



### Application

- Verifying end-to-end continuity with integrated tuneable laser source prior to service turn-up
- Testing new DWDM wavelength routes without disrupting traffic on active channels
- Pinpointing faults and their exact locations while in service
- Certification and troubleshooting of hybrid CWDM/DWDM networks (when paired with CWDM OTDR module and T-BERD/MTS-4000 V2)

### Key Features

- Tuneable DWDM OTDR in the C-band (1528 nm-1563 nm/191.70 to 196.10 THz)
- 50 GHz/100 GHz/200 GHz channel spacing based on the ITU-T standard grid
- 42 dB dynamic range for access and metro applications
- Integrated C-band tuneable laser source with modulation capability
- Eliminate OTDR interpretation errors with Smart Link Mapper (SLM) (icon based view of fiber link with splice, connector, MUX/DEMUX)
- Compatible with T-BERD/MTS-2000, -4000 V2 and -5800 platforms

## Specifications

DWDM OTDR	
Wavelengths	C-band tuning – C62 to C12 (1527.99 nm – 1567.95 nm) at 100 GHz
Channel spacing	50/100/200 GHz
Dynamic range	44 dB
Event dead zone	1.5 m
Attenuation dead zone	4 m
Light source Wavelengths	Same as OTDR
Light Source Output Power	0 dBm
Light Source Operating Mode <sup>5</sup>	CW, 270 Hz, 330 Hz, 1 kHz, 2 kHz
Automatic traffic detection	Yes
In-service testing	Yes

## Multi-Fiber MPO Switch Module for T-BERD/MTS-4000 V2 Platform

VIAVI T-BERD/MTS-4000 V2 OTDR Platform with MPO switch module is an all-in-one versatile solution to qualify, certify and troubleshoot multi-fiber MPO cables. Equipped with a single piece of equipment, field technicians no longer need to use fan-out/break-out cables to efficiently test and certify MPO links.

Well suited for use in high-density fiber environments, multi-fiber MPO cables eliminate the expense of running individual patch cords for each service turn-up. Widely used in Data Center interconnects, MPO cables are spreading into telecom access applications such as FTTH, FTTA, or C-RAN. The use of an MPO switch is the best way to accurately and quickly characterize individual fibers of an MPO cable with an OTDR.

SLM software applications (Enterprise-SLM or Cable-SLM) allows testing in Numbering mode (8, 12, or others) or in Labelling mode and automates test workflow, certification and reporting

### FTTH-SLM:

- Tailored to PON testing through splitters (from ONT to OLT)
- Multiple pulses smart acquisition to discover any FTTH topologies and measure all their sections

### FTTA-SLM:

- Auto-selection of best acquisition parameters
- Detection and identification (labels) of FTTA network elements along the fiber link

### Enterprise-SLM

- Labeling schemes per DataCenter / Enterprise TIA-606 standard
- Project / task management capability to easily control and document all test results
- Management of an optical switch to test all fibers, of a MPO cable, sequentially, after one-button press.
- Compatible with CERTiFi Enterprise workflow solution (cloud & mobile apps)

### Cable-SLM:

- Project / task management capability to easily control and document all test results
- Management of multi-core fiber cables as separate projects with bird-eye view of entire cable testing progress

### Application

- Comprehensive Tier 2 (Advanced) fiber certification and troubleshooting for MPO fiber connectivity
- Data Center singlemode structured cabling
- FTTH/Access Networks MPO trunks
- Wireless Fronthaul (FTTA/C-RAN) MPO fiber cable

### Key Features

- Singlemode 1x 12 MPO Switch Module
- Pinned APC MPO port for connection to MPO links to be tested
- SC/APC port for connection to OTDR test port
- Automatically controlled by the OTDR
- Enterprise-SLM and Cable-SLM Ready
- Compatible with T-BERD/MTS-4000 & 4000 V2 Platform





## T-BERD/MTS-6000A v2 Compact Network Test Platform

T-BERD/MTS-6000A v2 is a compact and lightweight test platform designed for all phases of the network lifecycle from installation to maintenance of fiber networks. Modular in design, the T-BERD/MTS-6000A v2 offers an extensive portfolio of test functionality for multiple network layers.

The single Multi-Services Application Module (MSAM) provides an integrated solution for Ethernet, SONET/SDH, and higher-layer tests. Optical modules allow thorough testing of short-haul, long-haul, FTTx, CWDM, and high-speed 40 Gbps networks.

### Applications

- OTDR testing of very short multimode or singlemode fiber links to ultra-long hauls (up to 220 km)
- PMD, spectral attenuation profile, and chromatic dispersion (CD) testing
- CWDM and DWDM optical spectrum analysis
- High resolution OTDR for Avionics (aircraft, spacecraft, satellite, UAV) and maritime (submarine & ship) fiber certification
- High resolution OTDR for Wireless and Enterprise/DataCenter (Tier 2) fiber certification
- FiberComplete fully automated bi-directional IL/ORL & OTDR certification

### Key Features

- 8 inch touchscreen display
- Automated pass/fail fiber inspection analysis with optional P5000i microscope
- OTDR, CD/PMD, and OSA modules are compatible with the T-BERD/MTS-8000 scalable multitest platform
- Smart Link Mapper (SLM) eliminates OTDR interpretation errors without impacting test times
- Built-in optical power meter and VFL options



## T-BERD/MTS-8000 Scalable Multitest Platform

Keep ahead of the telecommunications technology curve with the T-BERD/MTS-8000, the industry's most innovative and versatile test solution for modern and next-generation network deployments. Built to support current and ultra-high-speed transmission network testing needs, the T-BERD/MTS-8000 embeds the latest state-of-the-art technology for those planning long-term investments and is simply the best-in-test solution.

Based on the award-winning VIAVI T-BERD/MTS-8000 platform the T-BERD/MTS-8000 meets next-generation network challenges with additional fiber inspection and test, ROADM, and 40/100 Gbps test capabilities.



### Applications

- OTDR testing of very short multimode or singlemode fiber links to ultra long hauls (up to 220 km)
- PMD, spectral attenuation profile, and chromatic dispersion (CD) testing
- PMD testing on fiber with live traffic and in-band & in-service OSNR testing in DWDM/ROADM systems
- CWDM and DWDM optical spectrum analysis
- FiberComplete fully automated bi-directional IL/ORL & OTDR certification

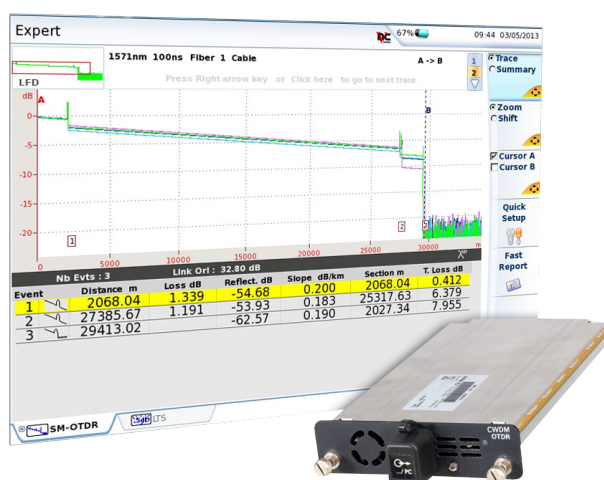
### Key Features

- 10.4 inch high-visibility touch-screen display
- High-speed PowerPC processor, rugged SATA solid-state hard disk, and latest high-capacity LiON battery technologies
- 1 Gigabit Ethernet, wireless connectivity (3 G, Wifi, Bluetooth) and four USB interfaces
- Automated pass/fail fiber inspection analysis with optional P5000i microscope
- Compatible with T-BERD/MTS-6000 V2 compact network test platform test modules
- Smart Link Mapper (SLM) eliminates OTDR interpretation errors without impacting test times

# 8100-Series OTDR Modules for T-BERD/ MTS-6000A v2, -8000 Platforms

VIAVI 8100-Series OTDR EVO family includes the "8100A", "8100B", the "8100C", and the "8100D" modules for any singlemode or multimode OTDR application and test scenario from very short to ultra-long distances.

The optical performances of the 8100-Series OTDR modules combined with the complete suite of T-BERD/MTS platforms testing features ensure that any testing job is done right the first time.



## Applications

- Access, Metro, Long Haul and Ultra Long Haul fiber network characterization
- Tier 2 certification of enterprise and data center networks
- Advanced qualification and troubleshooting of FTTH/PON networks.
- Core fiber network upgrade to 40 and 100 Gbps
- Fiber monitoring in and out-of-service

## Key Features

- Up to 50 dB dynamic range and 256,000 acquisition points
- ≤65 cm Event Dead Zone and 2.5 m Attenuation Dead Zone
- Integrated CW light source and broadband power meter on OTDR port (singlemode wavelengths)
- PON optimized to test up to 1x128 splitter type
- Combined singlemode/multimode version

Modules	8100A	8100B			8100C				8100D	
Module	E8146A	E8126B	E8136B	E81165B	E81162C	E8126C	E8136C	E8139C	E8126D	E8136D
Wavelength	850/1300 1310/1550 nm	1310/ 1550 nm	1310/ 1550/ 1625 nm	1650 nm in-service	1625 nm in-service	1310/ 1550 nm	1310/ 1550/ 1625 nm	1310/ 1490/ 1550 nm	1310/ 1550 nm	1310/ 1550/ 1625 nm
Dynamic range	24/ 24 dB 40/ 40 dB	41/ 40 dB	41/ 40/ 40 dB	40 dB	46 dB	47.5/ 47 dB	47.5/ 47/ 47.5 dB	47.5/ 47/ 47.5 dB	50/ 50 dB	50/ 50/ 50 dB
Fiber	Multi-mode/ singlemode	Singlemode	Singlemode	Singlemode	Singlemode	Singlemode	Singlemode	Singlemode	Singlemode	Singlemode
Power meter		✓	✓	✓	✓	✓	✓	✓	✓	✓
Light source	✓	✓	✓	✓	✓	✓	✓	✓	✓	✓
Event dead zone	Multimode: 0.25 m Single-mode: 0.60 m	0.65 m			0.6 m				0.5 m	
Attenuation dead zone	2 m	2 m			2 m				2.5 m	
Splitter attenuation dead zone	25 m after a 15 dB splitter loss (single- mode only)	25 m after a 15 dB splitter loss			25 m after a 15 dB splitter loss/60 m after a 18 dB splitter loss				15 m after a 15 dB splitter loss	

# FiberComplete Integrated Loss, ORL and OTDR Modules – 8100-Series for T-BERD/6000A v2, -8000 Platforms

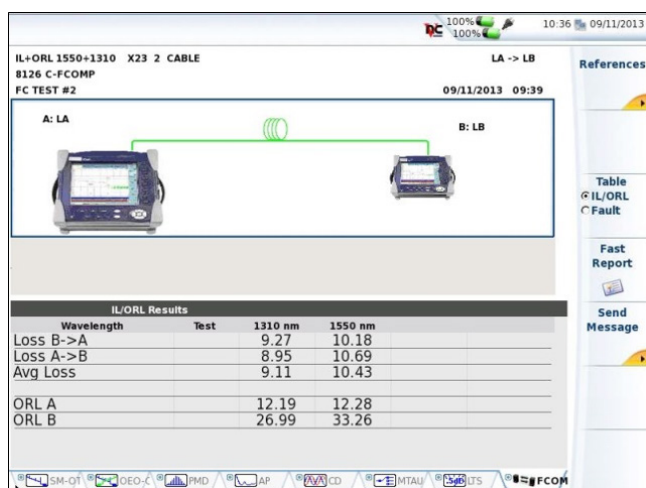
You can now equip each technician with a single piece of equipment that fulfills all of the traditional fiber testing requirements. The VIAVI 8100-Series Fiber Characterization module is part of the EVO family that revolutionizes fiber characterization testing. This unique module combines FiberComplete testing and broadband source functions with only one fiber connection. It supports the characterization of optical link commissioning as well as network upgrades, ensuring efficient testing and an optimal workflow. FiberComplete cuts testing in half with fewer connection and disconnections, automatic continuity check and an intelligent fault finder, minimizes training and gets reliable measurements using a single connections port that combines a fully automated process with easy-to-read results, and optimizes workflow by compiling tests results into one complete cable view and automatically storing all measurements in one folder.

## Application

- Certification, maintenance and troubleshooting of any fiber optic links.
- Installation and commissioning of Access, Metro and Very Long Haul networks
- 4 G/LTE backhaul high-speed upgrades
- Fiber network bit rate upgrades to 10/40/100 G
- Troubleshoot in FaultFinder mode for immediate results

## Key Features

- Single module, single port testing
- Make one connection, one-touch automated measurements
- Automatically measure bidirectional OTDR, IL, and ORL with one
- Real-time continuity check and automatic product pairing
- Manage fiber and cable results with on-board report generation
- Step-by-step wizard for initial IL/ORL referencing



## Specifications

### Bi-directional Testing

Wavelength	1310 / 1550 / 1625 nm
------------	-----------------------

### Insertion Loss

Dynamic range	42 dB typical
IL uncertainty	+/-0.2 dB
IL repeatability	<0.05 dB

### ORL

ORL range	up to 55 dB
ORL uncertainty	+/-0.9 dB
Repeatability	<0.1 dB

### Broadband Source

Wavelength range	1460 to 1640 nm
Output power level	>5 dBm
Operating modes	Modulated, polarized, or continuous

# Hi-Res Multimode OTDR Solution

The VIAVI Hi-Res multimode OTDR solution characterizes and locates faults on very short multimode fiber runs deployed in aircraft, spacecraft, submarines, and ships. Also suitable for use in other short run fiber environments such as Wireless (DAS, 4 G, 5 G, C-RAN) deployments and Enterprise/ Data Center environments. It is the industry's most compact, lightweight, and portable unit, enabling testing in areas where access to fiber is difficult or limited.



### Application

- Fiber optics cable assembly manufacturing
- Fiber testing in commercial or military aircraft, spacecraft or Unmanned Aerial Vehicles (UAV)
- Fiber testing in submarines and ships
- Fiber certification (Tier 2) and troubleshooting in Enterprise and Data Center environments

### Key Features

- Industry-leading dead-zone performance
- Streamlined user interface and error-free setup
- Connector end-face inspection and automated pass/fail analysis
- FastReport onboard PDF report generation
- TIA/IEC pass/fail thresholds for Tier-2 certification
- Eliminate OTDR interpretation errors with Smart Link Mapper (RDZ-SLM)
- Compatible with T-BERD/MTS-6000A v2 Platform

## Specifications

High Resolution OTDR				
	Central wavelength	Dynamic range	Event dead zone	Attenuation dead zone
RDZ-SLM OTDR Application	850 +10/-30 nm	16 dB	0.2 m	0.4 m
Expert OTDR Application	850 +10/-30 nm; 1300 ±20 nm	24/24 dB	0.2/0.25 m	1.5/2.1 m



# Optical Dispersion Analysis

Chromatic dispersion (CD) and polarization mode dispersion (PMD) create transmission issues in high-speed networks. These speed-limiting phenomena threaten the integrity of the signal starting at 10 Gbit/s, which in turn affects the quality of service. VIAVI optical dispersion measurement module (DISPAP) offers chromatic dispersion (CD), polarization mode dispersion (PMD), and attenuation profile (AP) test functions in one plug-in module. It is the industry's most compact and integrated dispersion solution dedicated to field testing fiber optic networks.

## Optical Dispersion Measurement Module

### Chromatic Dispersion

- Two-ended test using one fiber based on phase shift method
- Full wavelength range characterization
- Suitable for any fiber type
- High dynamic range up to 55 dB

### Polarization Mode Dispersion

- Based on the fixed analyzer method using fast Fourier transform (FFT)
- Established in the market
- High dynamic range up to 65 dB

### Attenuation Profile

- dB loss/km over the full wavelength range: 1260–1640 nm
- Allows CWDM and DWDM transmission band characterization
- Water peak (1383 nm area) characterization



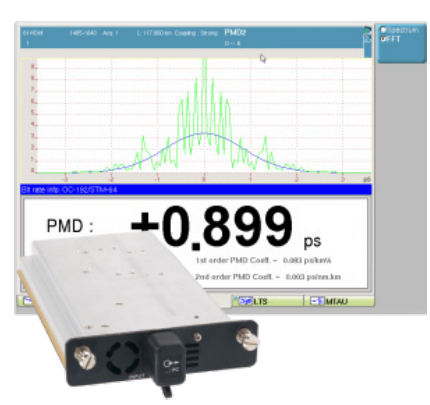
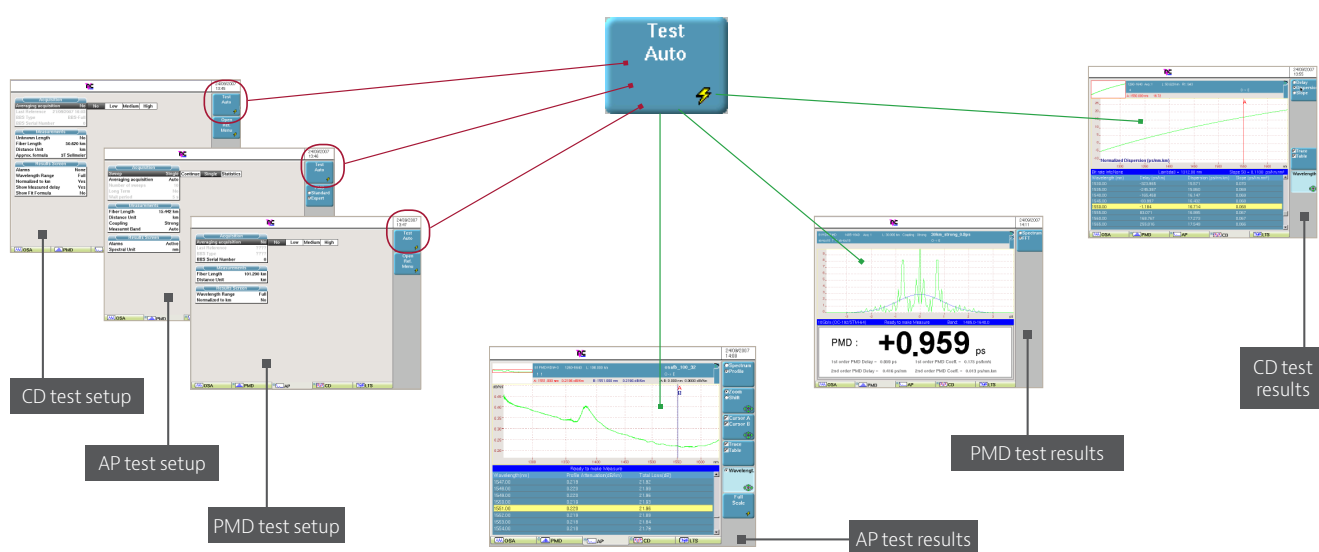
# Optical Broadband Sources for Dispersion Testing

VIAVI Optical Dispersion Modules require a broadband light source at the far end to perform CD, PMD and AP measurements. Three broadband sources with different wavelength range coverage and output power are available depending on the application.



	OBS-500 Handheld Broadband Light Source	OBS-550 Handheld Broadband Light Source with High Dynamic (HD) Mode	BBS2A Broadband Light Source Module
<b>Wavelength range</b>	1485 nm to 1640 nm	1485 nm to 1640 nm / 1530 to 1610 nm (HD mode)	1260 nm to 1640 nm
<b>Output Power level</b>	>8 dBm	>8 dBm / >16 dBm (HD mode)	>8 dBm

## Test results provided at the touch of a button



Our compact and integrated dispersion testing solutions perform fiber characterization links as well as optical network characterization with high efficiency and reliability (point-to-point or complete network).

- PMD module (E81PMD)
- CD module (E81CD)
- Combines PMD/CD and attenuation profile testing in a single module (E81DISPAP)

# Optical Spectrum Analysis

The range of compact VIAVI Optical Spectrum Analyzers (OSA) are tailored for spectral measurements in CWDM systems in the access network as well as DWDM systems in the backbone and for Next Generation 40/100/200/400 G high-speed network backbones. The range also features an OSA version for ROADM based systems or 40 G networks with tight channel spacing, providing true OSNR measurements based on VIAVI unique in-band OSNR method.

Supported by applications such as the WDM-Expert VIAVI solutions address analysis complexities added due to networks carrying a mix of 2.5/10/40/100 G data rates and services. In addition to traditional information about the wavelength, power, and noise for each channel, WDM-Expert indicates the transmitted data rate per channel as well as the presence of 40/100 G or higher speed polarization-multiplexed (Pol-Mux) signals. Allowing users to correlate OSNR results to data rates instantaneously without the need to look up network plans and to quickly identify the Pol-Mux signals of coherent systems, all in real-time with no impact on the measurement times of the OSA scans. OSA usability is further simplified through customized results displays with user-defined templates for results tables of content.

## COSA-4055 CWDM Optical Spectrum Analyzer Module for T-BERD/MTS-2000, -4000 V2, -5800 Platforms

The COSA-4055 is the smallest CWDM optical spectrum analyzer (OSA) on the market. The COSA-4055 module for the T-BERD/MTS-2000, -4000 V2, and -5800 platforms offers the functionality and speed of an OSA in a handheld form factor at a fraction of the price of a traditional OSA. It is an ideal test tool for service providers to install, maintain and upgrade metro/access links and CWDM systems. It measures wavelengths and power levels of CWDM channels and displays the complete spectrum.



### Application

- Performance verification in Metro Access networks
- Maintenance and troubleshooting of CWDM networks
- Upgrade of CWDM networks
- Spectral and drift testing of CWDM sources
- Point-to-point Mux/Demux and point-to-multipoint OADM testing

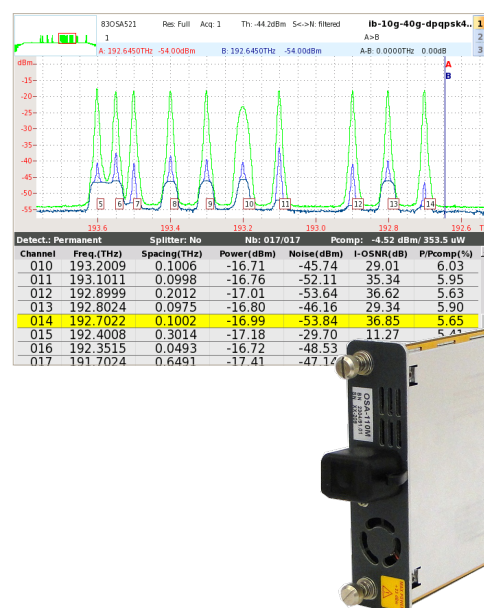
### Key Features

- Fast scanning speed (4s)
- Power and wavelength drift test application
- Pass/fail analysis
- 1260 to 1625 nm wavelength range
- ITU-T G. 694.2 CWDM wavelength and customized grids
- Compliant with ITU-T G.695 and G674.2 standards
- Additional slots for up to two SFP CWDM transceivers

## OSA-110M/110H/110R Compact Full-Band OSAs

The OSA-110 Series is the next generation of compact VIAVI optical spectrum analyzer (OSA) modules with unmatched size and performance. Ideal for field use, an OSA-110 module fits inside the MTS-6000A v2 series platform, offering the smallest full-band OSA solution on the market. The OSA-110 Series is suitable for all optical coarse wavelength division multiplexing (CWDM) and dense wavelength-division multiplexing (DWDM) networks down to 33 GHz channel spacing.

In addition to standard features provided by the OSA-110M, the OSA-110H integrates a high-power measurement capability, making it the ideal tool for cable TV operators. The OSA-110R includes the well-known VIAVI in-band measurement technique to measure the true OSNR in ROADM-based networks and in 40 Gbps systems with overlapping spectra.



### Application

- Deploying and maintaining DWDM metro and core networks
- Installing and maintaining CWDM systems in CATV, access, and mobile backhaul
- Verifying high-speed 40/100 G interfaces
- Provisioning and troubleshooting ROADM networks

### Key Features

- Full-band measurement: 1250 nm up to 1650 nm
- Guaranteed  $\pm 0.05$  nm wavelength accuracy with built-in wavelength calibrator
- High power measurement version (up to +30 dBm) for CATV applications (OSA-110H)
- In-band OSNR measurement version (OSA-110R)
- Compatible with the T-BERD/MTS-6000A v2, -8000 Platforms

## OSA-500M /500R/500RS High Performance Full-Band OSAs

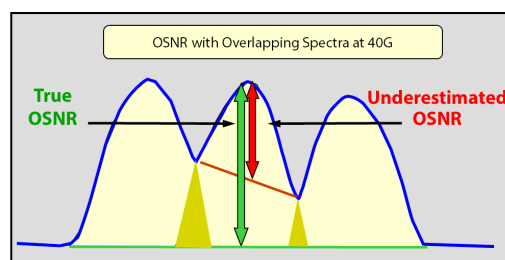
Targeted for advanced test solutions, VIAVI OSA-500x modules represent high-performance use for full-band spectral testing. Their industry-leading 0.038 nm optical resolution bandwidth makes these optical spectrum analyzers ideal for unmatched performance testing in ultradense wavelength-division multiplexing (DWDM) networks with channel spacing down to 25 GHz.

All instruments include an internal wavelength calibrator that guarantees 0.010 nm.

unsurpassed wavelength accuracy without external recalibration.

The OSA-500M is a general-purpose high-performance OSA for use in installing and maintaining DWDM networks. OSA-501M provides a unique channel-drop function to isolate single DWDM channels from the spectrum during maintenance and troubleshooting. OSA-500 improves the optical-filter dynamic range for testing the highest DWDM system OSNR values. OSA-500R and OSA-500RS include a new technique to measure true in-band OSNR in ROADM-based and in 40 G systems with overlapping spectra. The OSA-500R is the standard instrument for measuring in-band OSNR, the OSA-500RS is the high-speed version that can complete measurements in less than 30 seconds.

Supported by the T-BERD/MTS-8000 platform.



### Application

- Measurement of the true in-band OSNR in Agile Optical network – including testing ROADM & dispersion compensating modules
- DWDM and CWDM system testing during installation, maintenance, and network upgrade
- Install and maintain CWDM systems in CATV, access, and mobile backhaul
- Automated DWDM passive and active component testing
- Verification of ROADM configurations in Agile Optical Networks

### Key Features

- Full-band 1250–1650 nm for all CWDM and DWDM networks
- New Optical Polarization Splitting method (OPS-method, VIAVI patent pending) for measuring the true in-band OSNR in ROADM based networks
- Channel drop option for troubleshooting and fault location, single channel isolation for in-depth signal analysis with BERT or Q-factor meter
- Future-proof signal analysis for 40/100 G data rates, and next-generation modulation formats
- Software option for PMD testing
- Internal wavelength calibrator guarantees unsurpassed 0.010 nm wavelength accuracy without external recalibration



## OSA Modules: High resolution OSA-610 for T-BERD/MTS-6000A v2, -8000 Platforms

VIAVI OSA-610 High Resolution Optical Spectrum Analyzer offers outstanding resolution bandwidth and unprecedented wavelength accuracy that is 5 to 10 times better than traditional OSAs, making it ideal for existing applications but also advanced signal analysis such as 400 G super channels. It is a compact solution for lab and field where reliability and performance are critical. Compatible with the T-BERD/MTS-6000A v2, -8000 Platforms



### Application

- Qualify 10/40/100/400 G components and systems
- Validate and deploy 100 G & 400 G flex-grid DWDM systems
- Qualify Nyquist signals and super channels

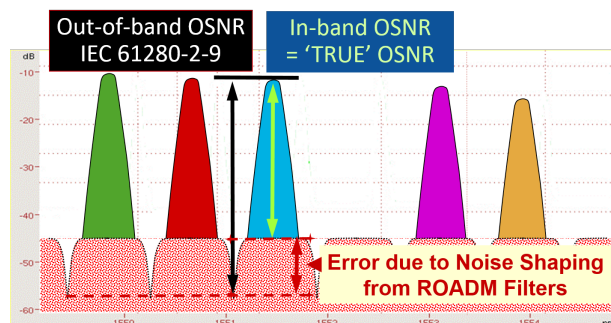
### Key Features

- Industry's first field OSA that fully analyzes 400 G Nyquist WDM signals
- Extended C-band acquisition range (1526-1568 nm)
- Frequency, power level and OSNR measurement
- 3 pm wavelength accuracy
- Side-mode suppression ratio measurement capability
- The smallest and lightest high-performance 400 G ready OSA available

## OSA Modules: In-service Pol-Mux OSA-710 for T-BERD/MTS-8000 Platforms

The OSA-710 is the first Optical Spectrum Analyzer that can perform in-band OSNR measurement in high speed, ROADM based DWDM networks using polarization multiplexing transmission formats without shutting down optical channels. This module uses a novel, proprietary spectral correlation measurement technique (VIAVI patent) along with an ultra-high resolution coherent receiver for complete signal characterization in amplitude, frequency, phase and polarization.

Supported by the T-BERD/MTS-8000 platform



Out-of-band versus 'True' in-band OSNR in ROADM networks

### Application

- In-band and in-service OSNR measurement, characterize traffic without shutting down the network or individual channels
- Installation, commissioning and maintenance testing of core and metro DWDM networks with or without ROADMs
- Testing undersea communication links
- Qualification of any fiber optic link utilizing coherent detection

### Key Features

- Power, wavelength, and in-band OSNR measurement for any kind of data rates and modulation schemes, including polarization-multiplexed signals
- Supports PM-BPSK, PM-QPSK, and PM-xQAM modulation formats used in 100, 200, and 400 G systems
- Tolerant of high chromatic dispersion (CD) and polarization mode dispersion (PMD)
- Measures per channel in-service CD
- Coherent OSA design with ultra-high resolution bandwidth for testing Nyquist- and Super-Channels

## SmartClass OCC-55/-56 Optical Channel Checkers

OCC-55 CWDM Optical Channel Checker and OCC-56 DWDM Optical Channel Checkers are compact and low-cost test alternative solutions to optical spectrum analyzers (OSA) for field service groups tasked with the installation, maintenance and upgrades of WDM systems testing. These selective power meters scan the WDM channels according to ITU-T wavelength grid and automatically records wavelength/frequency and related power level.



### Application

- Installation, maintenance and upgrade of CWDM and DWDM systems
- Analysis of single channel before MUX and DEMUX Qualification of multiplexed signals
- In-service measurement and network element verification Channel drop testing at optical add/drop multiplexers (OADM)

### Key Features

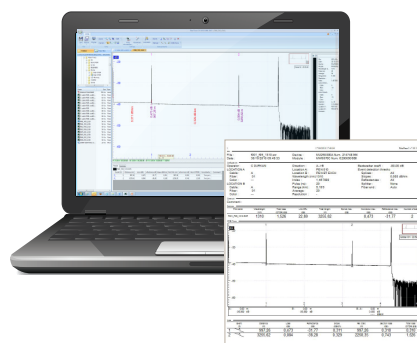
- ITU-T G.694.2 CWDM channels measurements (up to 18 channels) (OCC-55)
- ITU-T 50/100/200 GHz DWDM channels (OCC-56)
- Channel drift monitoring
- Bar Graph and Table of results display mode
- Light and compact (0.5 kg/1.1 lb)
- Report generation via OFS-355 Smart Optical Reporting Software

# Post-Analysis PC Software

Post-processing PC software offers fast and efficient viewing, editing, analyzing, and reporting of optical fiber test data.

## Ordering Information

Description	Part Number
<b>FiberTrace 2 PC Software</b> FiberTrace 2 enables users to view, edit, analyze and print, in a professional format, any optical test data acquired in the field with T-BERD/MTS platforms.	EOFS-100
<b>FiberCable 2 PC Software</b> FiberCable 2 also provides the capability to generate high fiber counts, cable OTDR acceptance reports, and fiber-characterization reports combining various test results in a single document.	EOFS-200



Optical data post-processing software is available in two versions.

- FiberTrace 2 lets users view, edit, analyze, and print, in a professional format, any optical test data acquired in the field with VIAVI T-BERD/MTS platforms. It is ideal for small fiber jobs.
- FiberCable 2 adds the ability to generate high-fiber-count cable OTDR acceptance reports and fiber-characterization reports combining various test results in a single document. It is ideal for the analysis and characterization of large groups of fibers.

# Asset, Data, and Workflow Management

## StrataSync™

VIAVI StrataSync forms a cloud hosted solution supporting a range of cloud-enabled instruments providing centralized asset, inventory, configuration, and test data management. Covering a wide range of products including CATV, Access, Metro/Transport, Ethernet, Fiber, Wireless, WiFi, and Enterprise instruments. StrataSync is a key part of your instrument and field workforce ecosystem driving uniform method and procedures, enabling consistency of test while delivering the necessary actionable insights required to achieve operational efficiencies such as improved first time fix success rate and reduced repeat service calls.



VIAVI StrataSync enabled



### Application

- Global/regional/departamental asset tracking
- Centralized management of field instrument software, configuration, and test data
- Floating SW license and option management
- Self admin of instruments (TechPortal)
- Manage both direct and contractor workforce with a single platform
- Performance tracking (# of test completed, pass/fail rates, trends)

### Key Features

- Cloud-enabled architecture provides easy network access, unmatched scalability, and high availability
- Intuitive, browser-based interface tracks and upgrades instruments and displays, prints, stores, and exports test results
- Tech Portal personalized view shows just instruments, options, and actions relevant per-user
- Automated features quickly and easily update instrument firmware and options and configuration files
- Template creation and alignment to instruments ensures technicians always have correct configurations
- Quickly uploads test results to a centralized storage warehouse for analysis to benchmark service and provide insight into network performance



# CERTiFi

Powered by the VIAVI StrataSync platform, CERTiFi empowers every team member with the information needed to complete tasks accurately and on time.

With CERTiFi, team members establish alignment at every stage of their project – from creating design requirements and assigning tasks, to performing tests and analyzing project metrics in real time. Manage your projects with confidence and equip your team to succeed with CERTiFi.

Supports SmartClass Fiber OLTS-85/-85P and Certifier 40 G



## Application

- Design and manage multiple projects with a web-based interface
- Assign projects to consultants, field technicians, sub-contractors, or other team members
- Preload test instruments with tasks and required test criteria such as label lists, acceptance criteria, notes, and more
- Provide site leads with real-time test results and project statuses on mobile device

## Key Features

- Manage your projects with confidence at every stage
- Align your team and project specifications in one place
- Communicate job requirements clearly and in real time
- Track project status and analyze results from anywhere
- Assign tasks directly to team members
- Deploy tasks directly to instruments with the CERTiFi mobile application

# Optical Network Monitoring

## SmartOTU™

### A plug-and-play fiber monitoring solution

SmartOTU monitors fibers longer than 150 km in all directions depending upon the OTDR module selected. Modular in design, it monitors both dark and live fiber and it is ideal for all optical networks for network security protection and pinpointing events such as fiber tapping, to a few tenths of a decibel. SmartOTU is a standalone remote fiber test solution that can be deployed right out of the box with no training or IT configuration required. SmartOTU does not require any additional server or software applications — a simple web browser is enough to access all functionality, including mapping. SmartOTU displays the exact GPS location of a fault on widely-available, cloud-based mapping such as Google, Bing, or legacy GIS. SmartOTU is fully compatible with the VIAVI optical network monitoring system (ONMSi) and can be upgraded to be a comprehensive remote fiber test system as the network grows. SmartOTU is enabled by either the OTU-8000 hardware or the ultra compact OTU-5000. This allows you to perform fiber monitoring with short, medium and long distance remote OTDR test in any location in the network where you can install a small probe.



### Applications

- Optical fiber monitoring
- "RIP" monitoring (Public Initiative Network)
- Proactive maintenance – Fiber security — tap detection
- Ideal for datacenter monitoring to ensure SLA compliance

### Key Features

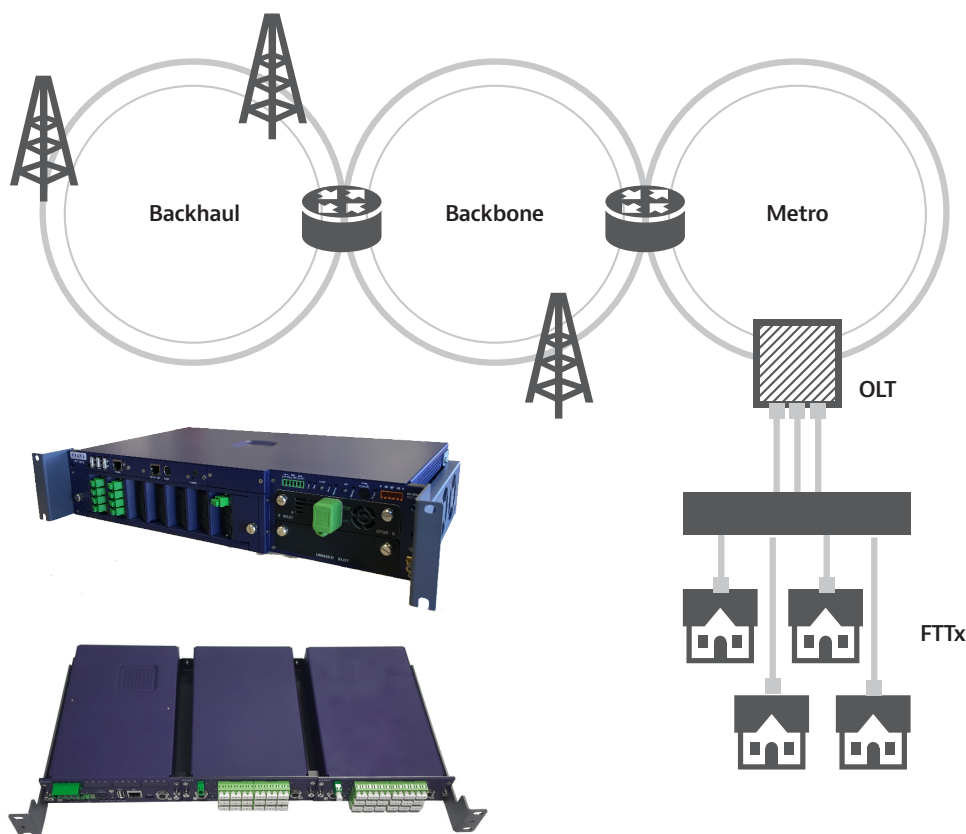
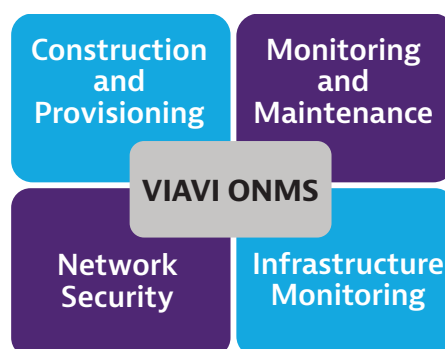
- Easy-to-use interface with Web browser access
- E-mail and SMS notifications, SNMP interface, Secure communication (HTTPS) on request
- Instantaneous view of current OTDR measurement
- Deploy right out of the box — no server or local PC required
- Fault localization on cloud-based apps or legacy GIS
- Compatible with the VIAVI optical network monitoring system (ONMSi)

# Optical Network Monitoring System (ONMSi)

## Fiber Network Visibility that Scales for Both PON and Point-to-Point Networks

The ability to provide quad/triple play and passive optical network (PON) architectures with optical splitters has made fiber monitoring an even bigger challenge. VIAVI ONMSi is an optical network monitoring system that expands network visibility right from the core across the PON and into the premises—improving operational support and quality-of-service (QoS) for any type of network. ONMSi is a remote fiber test system that scans the fiber network 24/7 and automatically detects and locates faults without having to dispatch technicians in the field. VIAVI offers the industry's highest performance OTDR technology to produce an accurate, high resolution trace to locate faults, intrusions and degradation. Simply place an OTU (Optical Test Unit probe) to monitor fibers. The OTU integrates an optical time domain reflectometer (OTDR) and an optical switch to constantly compare baseline data to current data. It sends alarms if any fiber degradation occurs allowing your team to proactively maintain the network and protect it from intrusions.

VIAVI offers two types of OTUs that allow you to optimize both the type of OTDR module you need and the footprint and price point in your network. You can mix and match the OTU-8000 and the OTU-5000 in the same monitoring system to achieve full coverage of your network. The system can be used for PON construction and service provisioning, ongoing monitoring, infrastructure monitoring and network security applications



ONMSi offers a comprehensive fiber monitoring solution: it supports metro, core, access, and PON networks.



Contact us +1 844 GO VIAMI  
To find the VIAMI office nearest you,  
visit [viavisolutions.com/contact](https://www.viavisolutions.com/contact)

For further information  
on any of these products,  
please scan this QR code  
or contact your VIAMI  
representative.



© 2018 VIAMI Solutions Inc.  
Product specifications and descriptions  
in this document are subject to change  
without notice.

[viavisolutions.com](https://www.viavisolutions.com)